



S150C

S200C



S200CD



S350CD



S175CD



S1021CD

Many options for all applications

Virtually unbreakable with durable polycarbonate or Ultem® bodies

Compatible with any meter accepting a BNC connector

Accurate and reliable measurements across full pH scale (0-14)

Instantly ready for use: Extended shelf life (guaranteed for one year)

One year limited warranty

The right sensor makes the difference.

Choosing a sensor that is well-suited for your application will improve measurement accuracy and extend sensor lifetime.

S150C Series: The S150C polycarbonate pH sensor is easy to use and stands up to the usual wear and tear. This sensor performs reliably in environments such as swimming pools and hydroponics.

S200CD Series: The S200CD series of Ultem® pH sensors offers enhanced chemical compatibility. Great for testing samples with unknown composition, such as wastewater, these sensors feature double junction reference protection and operate at temperatures up to 80°C.

S175CD Series: The S175CD series offers the user a durable spear tip pH measurement option for semi solid foods, cheese as well as soil measurement.

S350CD Series: The S350CD series features a flat pH measuring surface that is easy to clean and is recommend for low volume samples.

S1021CD: Our S1021CD series thermoplastic pH electrodes are designed for maximum accuracy and sensor lifetime. These research grade probes stand up to aggressive chemicals and temperatures up to 100°C. The refillable design is excellent for precision measurements, even in low ionic samples.

SPECIFICATIONS

BASIC

S150/S200C Series	
Reference	Sealed
Junction Number	Single (1)
Junction Material	Pellon
Reference Solution	3.5 M KCl/AgCl (gel)
Glass Shape	Bulb
Body Material	Polycarbonate (S150C), Ultem (S200C)
Temperature Range	0-60 degrees C, 0-80 degrees C (S200C)
Strain Relief	No
BNC Boot	No
Bulb Protection	Slots (S150C), teeth (S200C)

UNIVERSAL

All Plastic Laboratory pH Electrodes	
Diameter	12mm
Length	150mm
pH Range	0 - 14 (Na ⁺ error at 12.3 < pH)
Response	95% in 1 second (bulb glass shape) 95% in 5 seconds (flat glass shape) 90% < in 5-7 seconds (spear glass shape)
Isopotential Point	7.00 pH (0 mV)
Offset	± 0.20 pH
Span	97% of theoretical or higher

ADVANCED

S200CD	
Reference	Sealed
Junction Number	Double (2)
Junction Material	Pellon
Reference Solution	3.5 M KCl/AgCl/KNO ₃ (gel)
Glass Shape	Bulb
Body Material	Ultem®
Temperature Range	0-80 degrees C
Strain Relief	No
BNC Boot	No
Bulb Protection	Teeth

S350CD	
Reference	Sealed
Junction Number	Double (2)
Junction Material	HDPE and Pellon
Reference Solution	3.5 M KCl/AgCl/ KNO ₃ (gel)
Glass Shape	Flat
Body Material	Ultem®
Temperature Range	0-80 degrees C
Strain Relief	No
BNC Boot	No

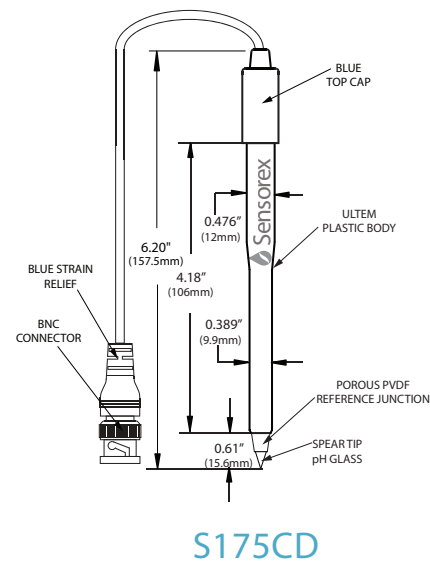
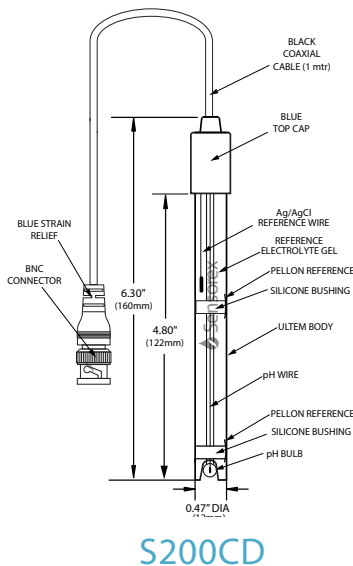
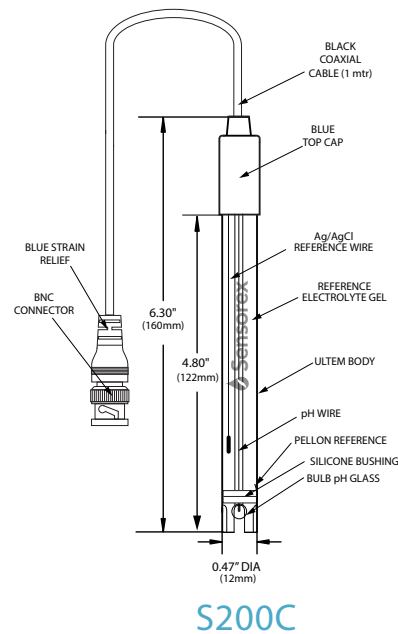
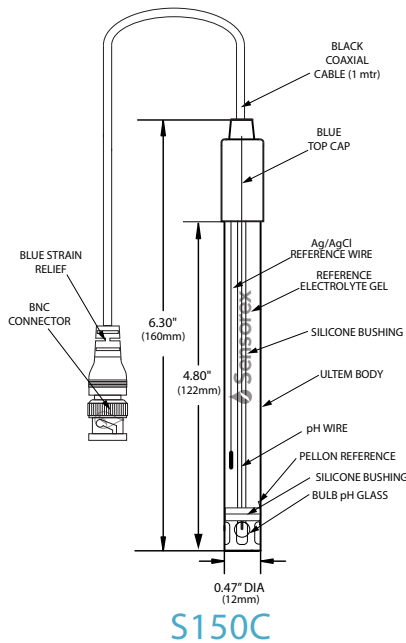
S175CD	
Reference	Sealed
Junction Number	Double (2)
Junction Material	Kynar and Pellon
Reference Solution	3.5 M KCl/AgCl/ KNO ₃ (gel)
Glass Shape	Spear
Body Material	Ultem®
Temperature Range	0-80 degrees C
Strain Relief	No
BNC Boot	No

SPECIALTY

RESEARCH GRADE

S1021CD	
Reference	Refillable
Junction Number	Double (2)
Junction Material	pHASE
Reference Solution	3.5 M KCl (liquid)
Glass Shape	Bulb
Body Material	Thermoplastic
Temperature Range	0-100 degrees C
Strain Relief	Yes
BNC Boot	No
Bulb Protection	Removable Guard

OUTLINES AND DIMENSIONS



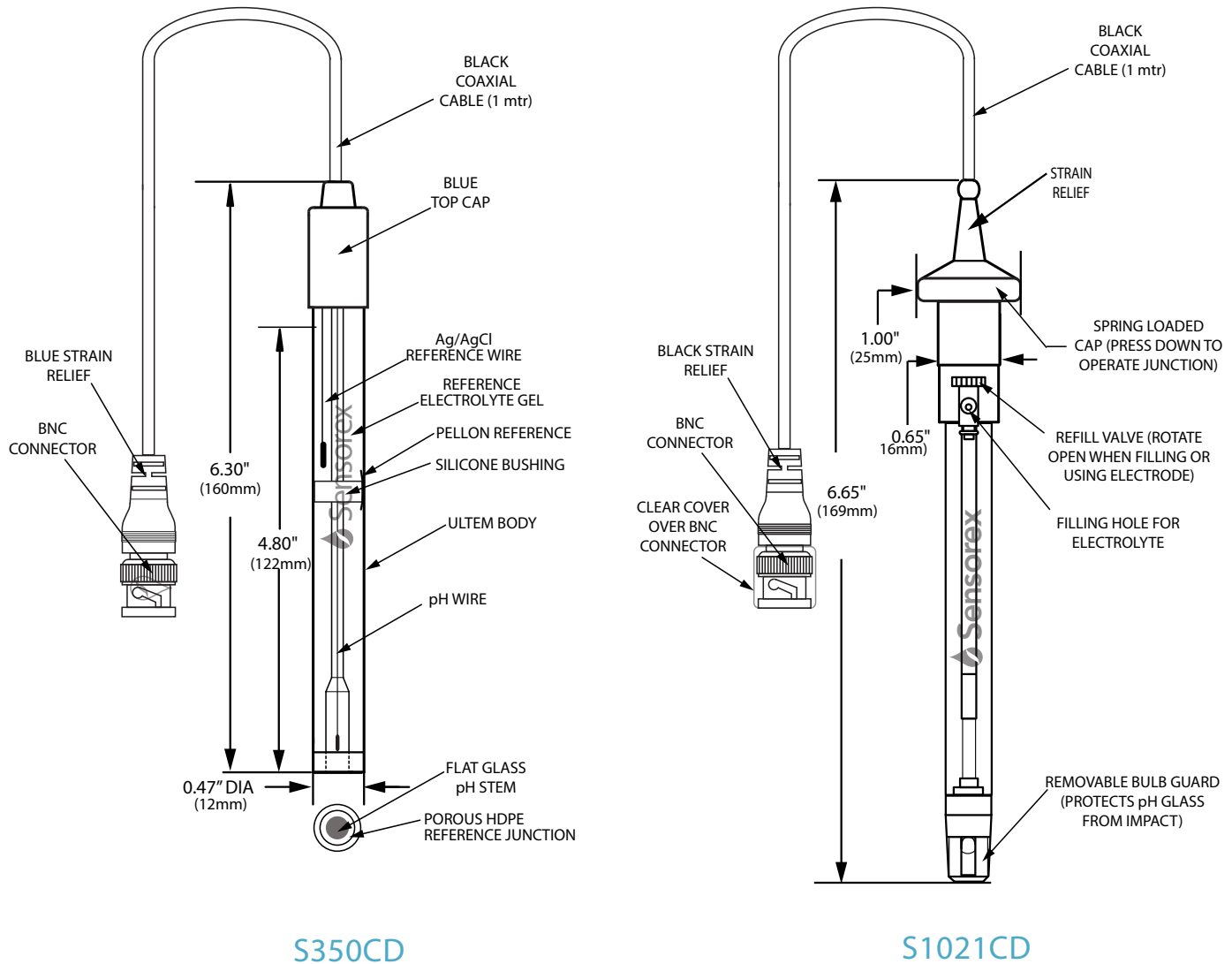
ORDERING INFORMATION

Part Number	Description
S150C/BNC	Single junction, sealed polycarbonate pH electrode, 1m cable, BNC ***
S200C/BNC	Single junction, sealed Ultem pH electrode, 1m cable, ENC ***
S200CD/BNC	Double junction, sealed Ultem pH electrode, 1m cable, BNC***
S175CD/BNC	Double junction, sealed Ultem® pH electrode with spear tip for food and soil applications, 1m cable, BNC***

*Ultem is a registered trademark of General Electric Company. No affiliation, endorsement or sponsorship is stated or implied.

*** Other cable length and connectors are available upon request. Contact Sensorex for details.

OUTLINES AND DIMENSIONS



ORDERING INFORMATION

Part Number	Description
S350CD/BNC	Double junction, sealed Ultem® pH electrode with flat measurement surface, 1m cable, BNC***
S1021CD/BNC	High accuracy, refillable reference, thermoplastic research grade double junction, pH electrode, 1m cable, BNC***

*Ultem is a registered trademark of General Electric Company. No affiliation, endorsement or sponsorship is stated or implied.

*** Other cable length and connectors are available upon request. Contact Sensorex for details.